



RP

Series

Features

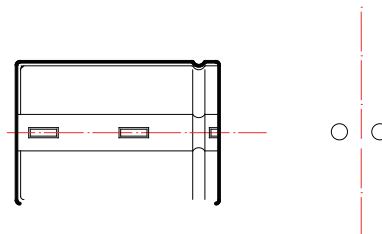
- High ripple current, Smaller size, Load life of 2000 hours at 105 °C, Used in Inverter welding machine.
- RoHS Adapted to the RoHS directive.



Specifications

Items	Performance Characteristics	
Operating Temperature Range	-25~ +105	
Rated Voltage Range	200- 450V	
Capacitance Tolerance	± 20% (120Hz, +20°C)	
Leakage Current	I ≤ 0.01CV (μA) 1.5mA (5%) at 20 °C, after 5 minutes, Whichever is smaller	
(tg) Dissipation Factor (+20 °C, 120Hz)	Rated voltage(V)	200V ~ 250V
	tg	0.15
Temperature Characteristics (Impedance ratio at 120Hz)	U _R (V)	200V ~ 250V
	Z-25 /Z+20	4
Load Life	+105 °C	2000 hours
	+105 °C	16 hours
Shelf Life	+105 °C	1000 hours
	+105 °C	16 hours

Case Table



Unit: mm

Frequency Coefficient

U _R (V) \ (Hz)	50	120	300	1K	10K	100K
200- 450	0.80	1.00	1.20	1.30	1.41	1.43

Capacitance change 20%

±0% of

ed value